

12714-HS-HD4

Closet Carrier

Vertical With Right Hand Vent

Specification

Josam 12714-HS-HD4 series coated cast iron single vertical 4" hub & spigot fitting double 4" hub & spigot branch inlets and 2" hub & spigot right-hand offset vent, adjustable carrier body, invertible for siphon jet or blowout closets, with ABS extension with integral test cap, pylon feet, anchor foot, plated hardware and neoprene fixture gasket.

Formerly 12294A series.

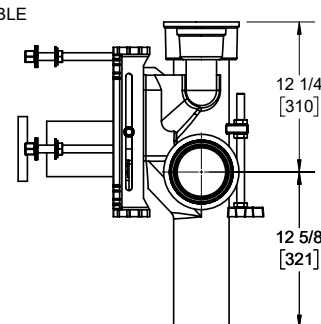
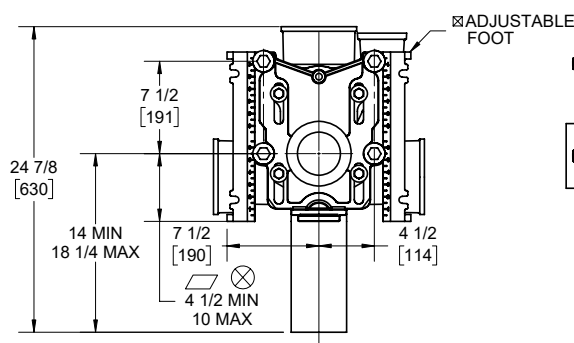
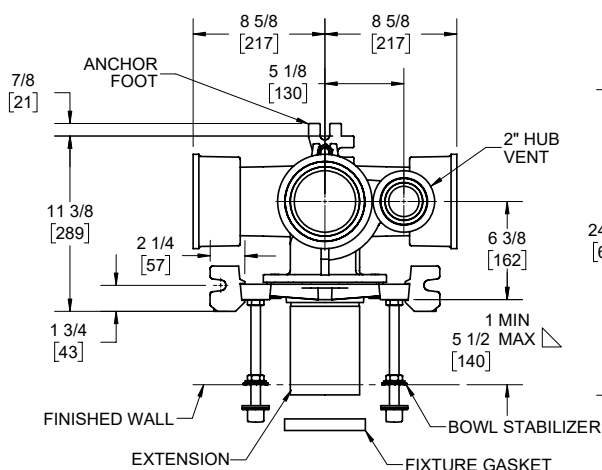
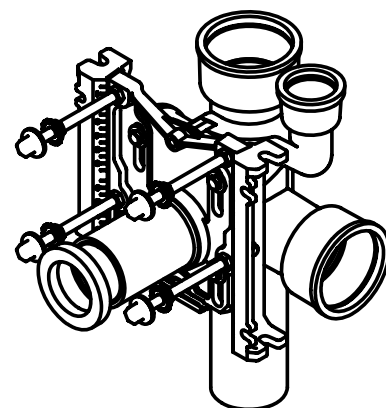
▢ For dimension shorter than 5-1/2" (1" min) cut extension. For longer extension (10-1/2" max) specify (-10).

⊗ For siphon jet roughing over 6" or blowout roughing over 12-1/2" specify on order.

Siphon jet dims shown. For blowout dims, use:

⊠ Recommend feet be secured to floor with 1/2" bolts and anchors (by others).

▢ Min 11" and max 16 1/2".



	-XSD	Extra special-duty 1,000 LB carrier
	-PF	Pylon foot, std.
	-OR	O-ring carrier
X	-HS	Hub & spigot
	-HD4	Double 4" hub branches
	-VP	Vandal-proof trim
	-1	Positioning frame

	-6	Supply pipe support (specify type of pipe)
	-10	ABS extension through 10-1/2" wall
	-24	Floor mounted back outlet china bowl
	-30	Cast iron adj. extension w/ connector
	-30-2	Cast iron adj. extension w/ connector & test cap
	-32	Carrier for wide chase installations
	-35	Carrier for wheelchair high rough

Josam product specifications in U.S. customary units are approximate and provided for reference only. For precise measurements, please contact Josam Technical Support. Josam reserves the right to change or modify product design, construction, specifications, or materials without prior notice and without incurring any obligation to make such changes and modifications on Josam products previously or subsequently sold.

Notes:

