

# 12714-RH4

## Closet Carrier

### Vertical With Right Hand Vent

#### Specification

Josam 12714-RH4 series coated cast iron single vertical 4" no-hub fitting with left-hand 4" no-hub branch inlet and 2" no-hub right-hand offset vent, adjustable carrier body, invertible for siphon jet or blowout closets, with ABS extension with integral test cap, pylon feet, anchor foot, plated hardware and neoprene fixture gasket.

Formerly 12744 series.

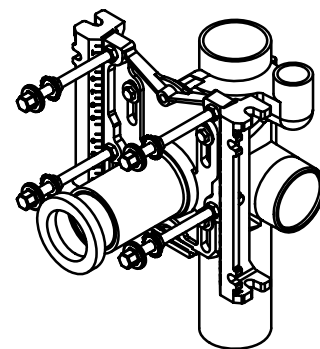
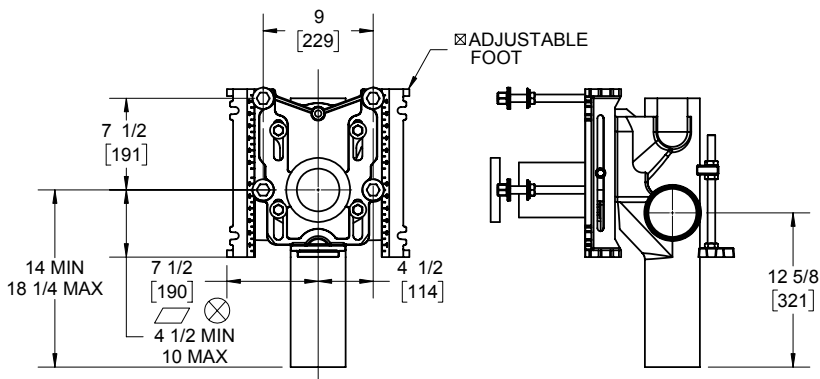
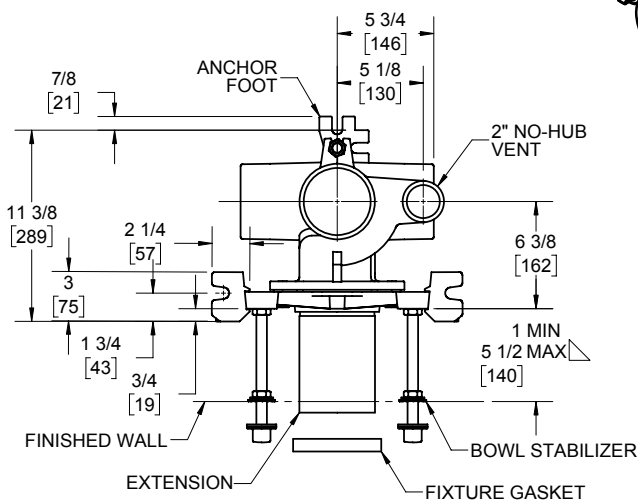
△ For dimension shorter than 5-1/2" (1" min) cut extension.  
For longer extension (10-1/2" max) specify (-10).

☒ Recommend feet be secured to floor with 1/2" bolts and anchors (by others).

⊗ For siphon jet roughing over 6" or blowout roughing over 12-1/2" specify on order.

Siphon jet dims shown.  
For blowout dims, use:

△ Min 11" and max 16-1/2".



	-XSD	Extra special-duty 1,000 LB carrier
	-PF	Pylon foot, STD.
	-OR	O-ring carrier
	-HS	Hub and spigot
<b>X</b>	-RH4	Right-hand 4" no-hub branch
	-HLH4	Left-hand 4" hub branch
	-VP	Vandal-proof trim
	-1	Positioning frame
	-6	Supply pipe support (specify type of pipe)

	-10	ABS extension through 10-1/2" wall
	-24	Floor mounted back outlet china bowl
	-30	Cast iron adj. extension w/connector
	-30-2	Cast iron adj. extension w/connector and test cap
	-32	Carrier for wide chase installations
	-35	Carrier for wheelchair high rough
	-50	No-hub auxiliary inlet, opposite vent
	-54	Threaded auxiliary inlet, opposite vent

Josam product specifications in U.S. customary units are approximate and provided for reference only. For precise measurements, please contact Josam Technical Support. Josam reserves the right to change or modify product design, construction, specifications, or materials without prior notice and without incurring any obligation to make such changes and modifications on Josam products previously or subsequently sold.

#### Notes:



A WATTS Brand