

14504

Closet Carrier

Single Close With 2" Vent

Specification

Josam 14504 series coated cast iron single vertical 4" no-hub single fitting with 2" no-hub vent, adjustable carrier body, invertible for siphon jet or blowout closets, with ABS extension with integral test cap, pylon feet, plated hardware and neoprene fixture gasket.

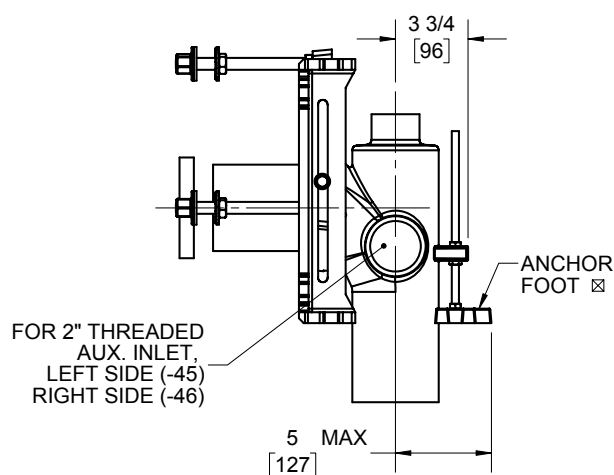
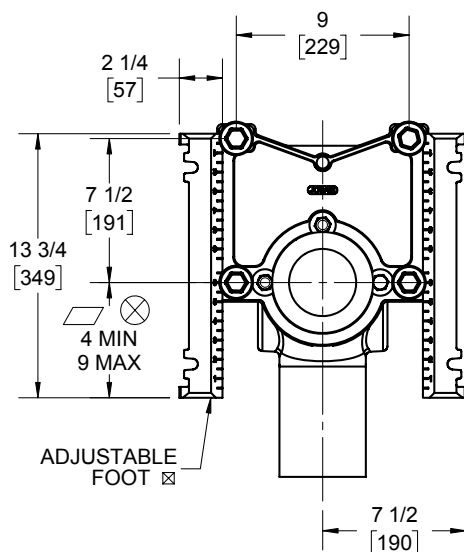
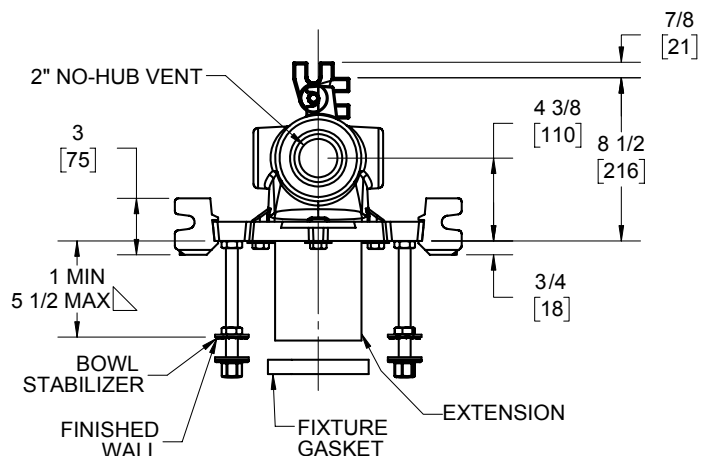
▴ For dimension shorter than 5-1/2" (1" min.) cut extension for longer extension (10-1/2" max.) specify (-10).

☒ Recommend feet be secured to floor with 1/2" bolts and anchors (by others).

⊗ For siphon jet roughing over 6" or blowout roughing over 12-1/2" specify on order.

Siphon jet dims shown. For blowout dims, use:

▴ Min. 11" and max. 16 1/2"



-SD	Special duty 500 LB carrier
-VP	Vandal-proof trim
-1	Positioning frame
-6	Supply pipe support (specify type of pipe)
-10	ABS extension through 10-1/2" wall
-24	Carrier for floor mounted back outlet china bowls

-30	Cast iron adj. ext. w/connector
-30-2	Cast iron adj. ext. w/connector and test cap
-45	Threaded left-hand auxiliary inlet
-46	Threaded right-hand auxiliary inlet
-SDH	Special duty high 750 LB carrier
-XSD	Extra especial duty 1,000 LB carrier

Josam product specifications in U.S. customary units are approximate and provided for reference only. For precise measurements, please contact Josam Technical Support. Josam reserves the right to change or modify product design, construction, specifications, or materials without prior notice and without incurring any obligation to make such changes and modifications on Josam products previously or subsequently sold.

Notes:



A WATTS Brand