

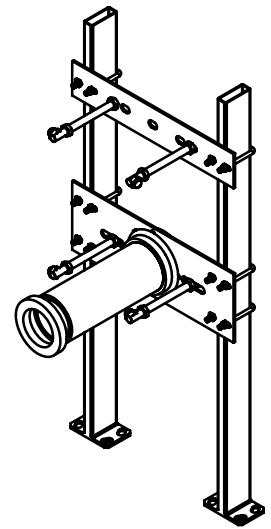
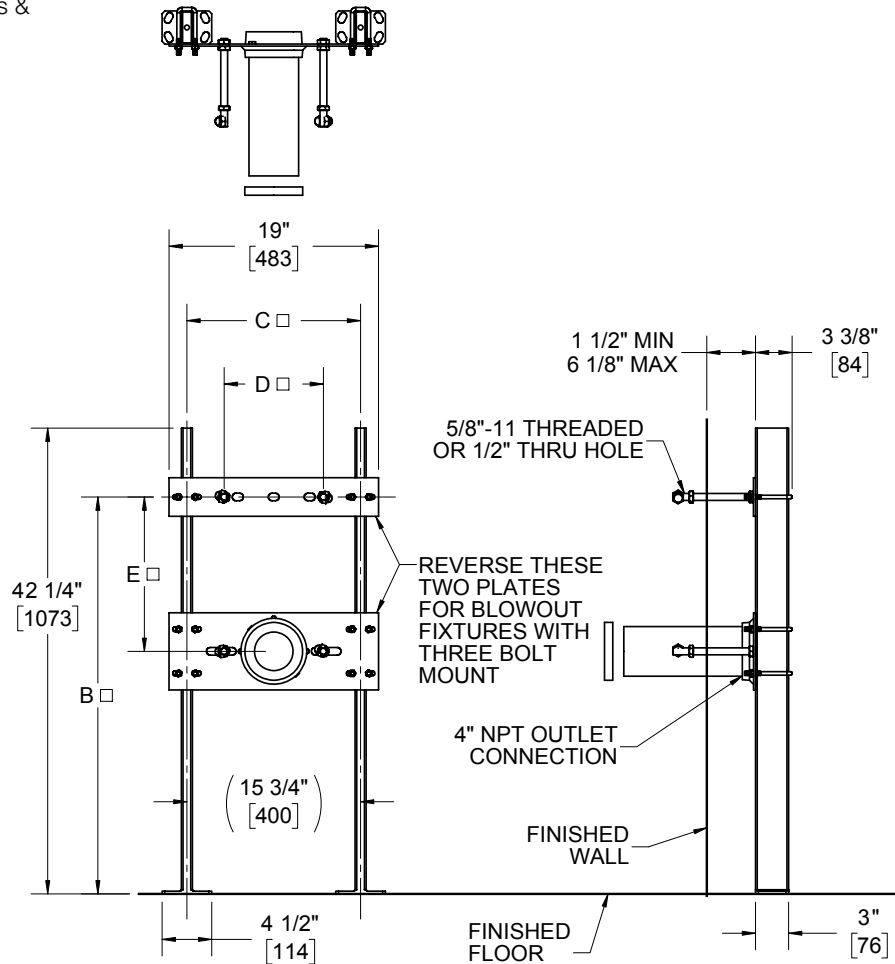
17730

Sink Carrier Floor-Mount Heavy-Duty Specification

Josam 17730 series floor-mounted, single, heavy-duty sink carrier with support plates, adjustable coupling with 4" piping connection, mounting studs, structural uprights, welded feet and chrome plated trim.

Notes:

1. Dimensions marked □ vary depending on mounted fixture.
2. Recommend feet be secured to floor with 1/2" bolts & anchors by others.



Manufacturer:

Number:

Size:

Name:

B _____

C _____

D _____

E _____

Rim height
Based on "B" Dim shown

-VP	Vandal-proof trim
-10	Studs for walls over 5-3/8" (spec. wall thickness)

-11	Cast iron adjustable extension (specify 6", 9" or 12" on order)
-60	Valve plate for attaching to upright

Josam product specifications in U.S. customary units are approximate and provided for reference only. For precise measurements, please contact Josam Technical Support. Josam reserves the right to change or modify product design, construction, specifications, or materials without prior notice and without incurring any obligation to make such changes and modifications on Josam products previously or subsequently sold.

Notes:

