

34720

Floor Drain

15" Extra Heavy-Duty Top With Bucket

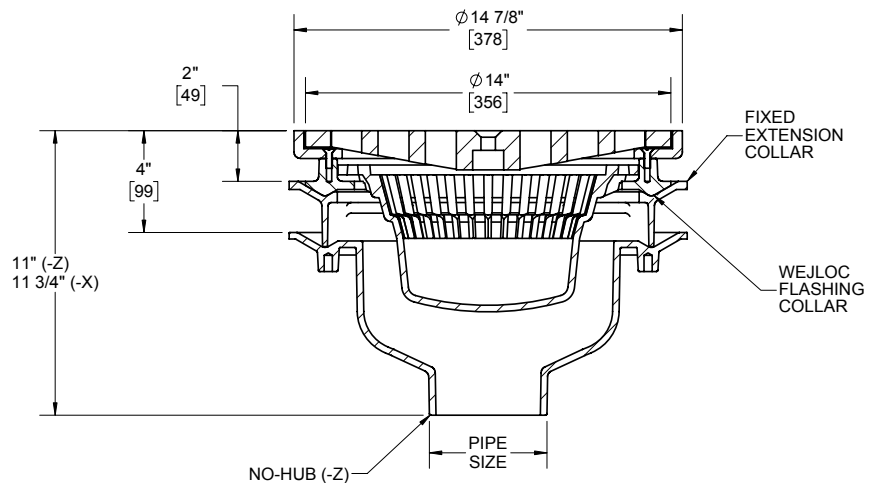
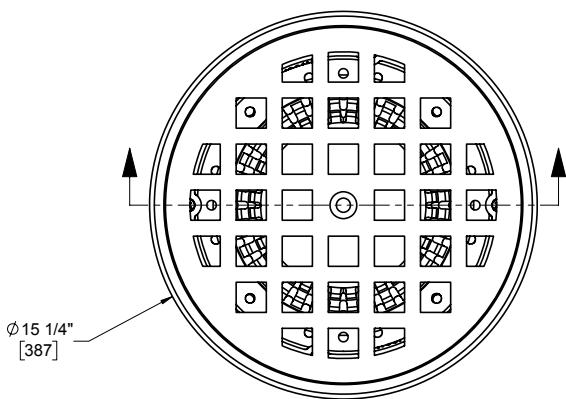
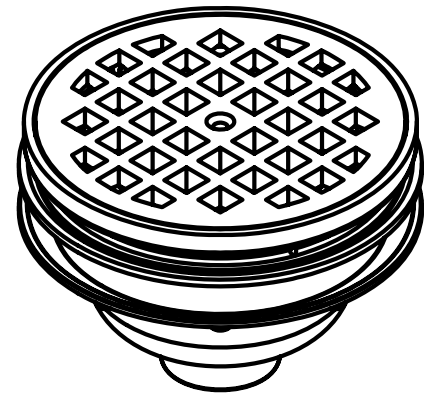
Specification

Josam 34720 series coated cast iron floor drain with two-piece body with double drainage flange, Wejloc® non-puncturing flashing clamp collar, weepholes, bottom outlet, round top, removable sediment bucket and extra heavy-duty loose-set grate.

Grate free area: 50.6 IN²

STD. Cast iron slot width 1-3/16" SQ.

-19 and -20 slot width 1-3/16" SQ.



Pipe Size
3"
4"
5"
6"

-7	Ductile iron grate
-15	Chained grate
-VP	Secured grate, vandal-proof screws
-19	Cast iron undergrate laminated top, nikaloy
-20	Cast iron undergrate laminated top, bronze
-49	3/4" primer tap
-50	1/2" primer tap

-66	No-hub side outlet
-84	Stainless steel mesh bucket liner
-88	Supplementary strainer
-92	Galvanized cast iron parts
-TSI	Trap seal insert (2"-4")
-X	Inside caulk outlet
-Z	No-hub spigot outlet

Josam product specifications in U.S. customary units are approximate and provided for reference only. For precise measurements, please contact Josam Technical Support. Josam reserves the right to change or modify product design, construction, specifications, or materials without prior notice and without incurring any obligation to make such changes and modifications on Josam products previously or subsequently sold.

Notes:

