

37810

Floor Drain

Medium Sump, 12" Heavy Duty Top

Specification

Josam 37810 series coated cast iron floor drain, two-piece medium-deep body with double drainage flange, non-puncturing flashing frame, weepholes, bottom outlet, square top, heavy duty loose-set grate and removable sediment bucket.

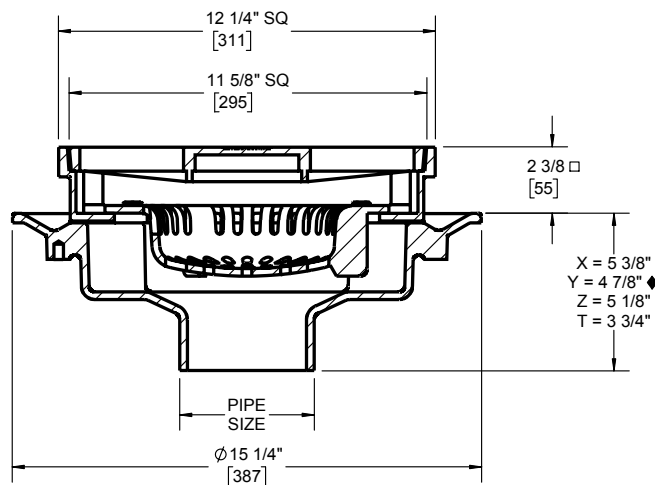
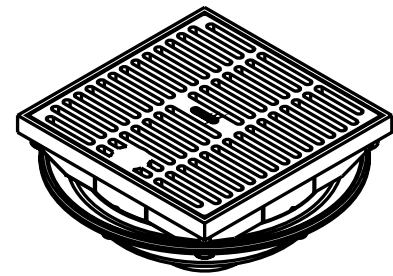
Slot width (STD, -19, -20): 3/8" (meets ADA)

Grate free area: 54 IN²

□ Add 1/4" when furnished with bronze or nikaloy top.

◆ Gasket on -Y connection conforms with ASTM-C564

* Available with -AE only.



	2"	Pipe size
	3"	Pipe size
	4"	Pipe size
	5"	Pipe size
	6"	Pipe size
	8"	Pipe size
	-X	Inside caulk outlet
	-Y	Push-on (2", 3", 4" only)
	-Z	No-hub
	-T	Threaded outlet
	-AE	Leveleze® adjustable extension
	-4*	Secondary flashing clamp
	-7	Ductile iron grate
	-14	Hinged grate

	-VP	Secured grate, vandal-proof screws
	-18	Hinged grate w/ latching device
	-19	Heavy-duty undergrate w/ satin nikaloy top
	-20	Heavy-duty undergrate w/ satin bronze top
	-39	Solid cast iron cover
	-49	3/4" primer tap
	-50	1/2" primer tap
	-66	No-hub side outlet
	-70	Less bucket
	-84	Stainless steel mesh bucket liner
	-88	Supplementary strainer
	-92	Galvanized cast iron parts
	-ARE	Acid resistant epoxy coating
	-TSI	Trap seal insert (2"-4")

Josam product specifications in U.S. customary units are approximate and provided for reference only. For precise measurements, please contact Josam Technical Support. Josam reserves the right to change or modify product design, construction, specifications, or materials without prior notice and without incurring any obligation to make such changes and modifications on Josam products previously or subsequently sold.

Notes:

