

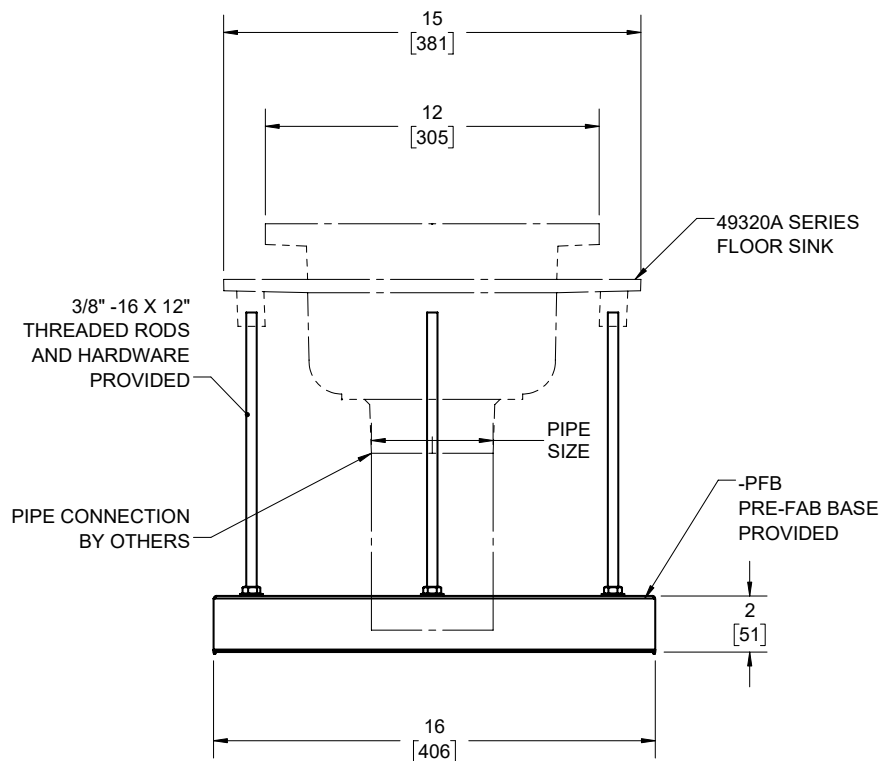
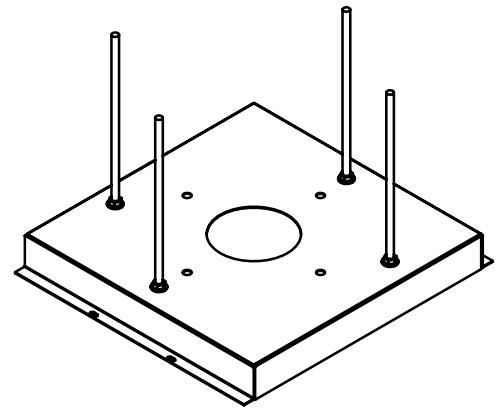
# 49320A-PFB

## Floor Sink Pre-Fab Base Specification

Josam Pre-Fab base option for 49320A series floor sinks.

-PFB option must be ordered at time of sink order for proper sink body modification.

Note: Floor sink must have flange.



	Base and hardware	Pipe size
	519872	2"
	519873	3"
	519874	4"
	519876	6"

Josam product specifications in U.S. customary units are approximate and provided for reference only. For precise measurements, please contact Josam Technical Support. Josam reserves the right to change or modify product design, construction, specifications, or materials without prior notice and without incurring any obligation to make such changes and modifications on Josam products previously or subsequently sold.

Notes:

